

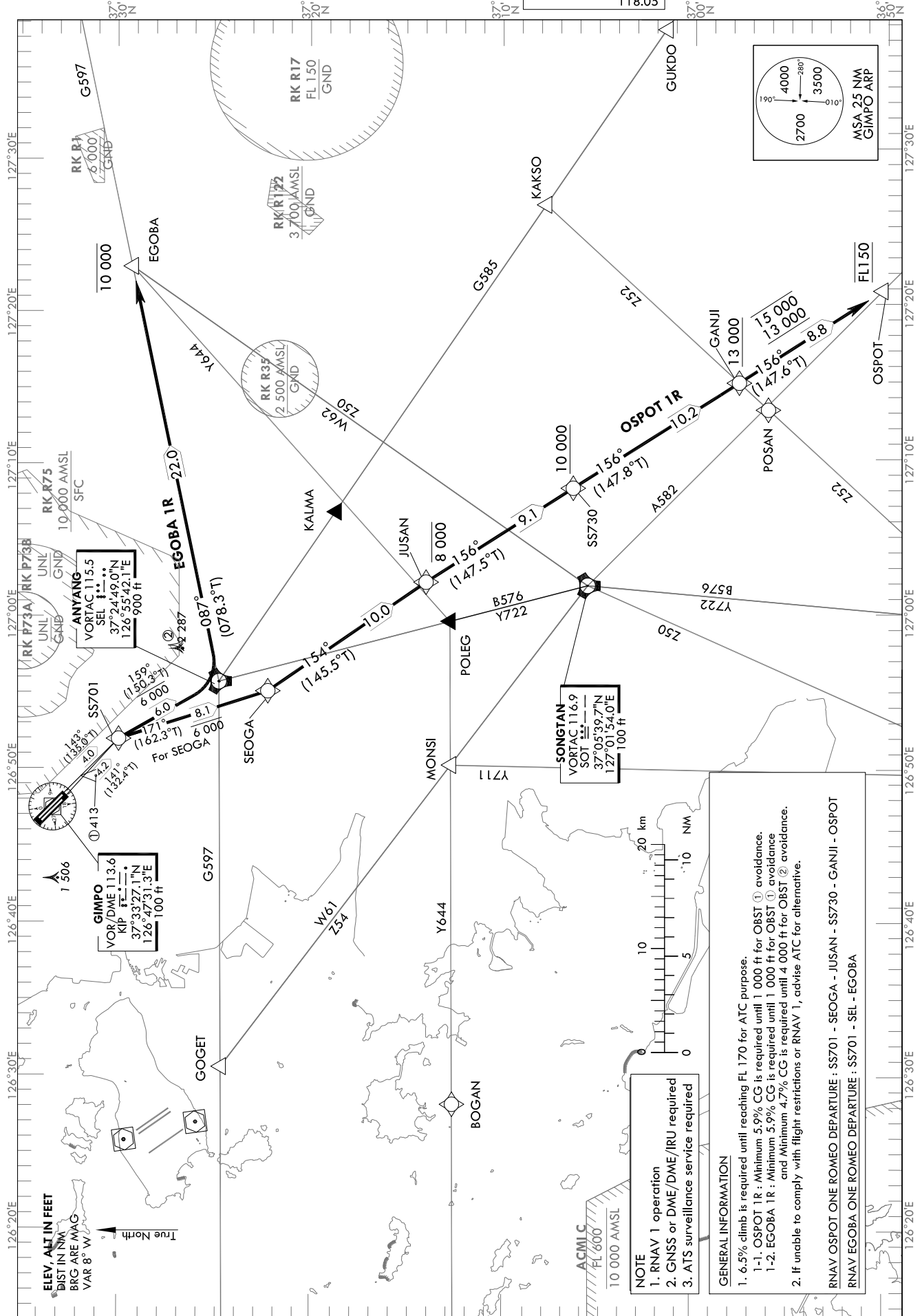
**STANDARD DEPARTURE CHART
INSTRUMENT (SID) - ICAO**

Note : Departure under ICAO Flight Procedures.

TRANSITION ALT 14 000
TRANSITION LVL FL 140

SEOUL DEP	125.15
	121.4
	124.8
GIMPO TWR	118.1
	118.05

SEOUL/Gimpo Intl(RKSS)
RWY 14L/R
RNAV OSPOT 1R, RNAV EGOBA 1R



SEOUL/Gimpo Intl(RKSS)
RWY 14L/R
RNAV OSPOT 1R, RNAV EGOBA 1R

AERONAUTICAL DATA TABULATION

Standard Instrument Departure Procedure Coding Tables

RNAV OSPOT 1R												
Serial Number	Path Descriptor	Waypoint Identifier	Fly-over	Course/Track °M(°T)	Distance (NM)	Turn direction	Altitude (ft)	Speed (kt)	Coordinates	VPA/RDH	Navigation specification	Remarks
001	CF	SS701	-	14L-143(135.0) 14R-141(132.4)	14L-4.0 14R-4.2	R	-	-	37°30'01.9"N 126°51'58.7"E (R 338 SEL/D6, R 142 KIP/D5)	-	RNAV 1	-
002	TF	SEOGA	-	171 (162.3)	8.1	-	-6 000	-	37°22'16.6"N 126°55'04.6"E (R 350 SOT/D18, R 160 KIP/D13)	-	RNAV 1	-
003	TF	JUSAN	-	154 (145.5)	10.0	-	-8 000	-	37°14'03.3"N 127°02'08.6"E (R 162 SEL/D12, R 157 KIP/D23)	-	RNAV 1	-
004	TF	SS730	-	156 (147.5)	9.1	-	+10 000	-	37°06'24.1"N 127°08'13.9"E (R 159 SEL/D21, R 090 SOT/D5)	-	RNAV 1	-
005	TF	GANJI	-	156 (147.8)	10.2	-	+13 000	-	36°57'45.7"N 127°15'01.2"E (R 158 SEL/D31, R 135 SOT/D13)	-	RNAV 1	-
006	TF	OSPOT	-	156 (147.6)	8.8	-	@FL 150	-	36°50'18.1"N 127°20'54.9"E (R 158 SEL/D40, R 143 SOT/D22)	-	RNAV 1	-

RNAV EGOBA 1R												
Serial Number	Path Descriptor	Waypoint Identifier	Fly-over	Course/Track °M(°T)	Distance (NM)	Turn direction	Altitude (ft)	Speed (kt)	Coordinates	VPA/RDH	Navigation specification	Remarks
001	CF	SS701	-	14L-143(135.0) 14R-141(132.4)	14L-4.0 14R-4.2	R	-	-	37°30'01.9"N 126°51'58.7"E (R 338 SEL/D6, R 142 KIP/D5)	-	RNAV 1	-
002	TF	SEL	-	159 (150.3)	6.0	-	-6 000	-	37°24'49.0"N 126°55'42.1"E (R 354 SOT/D20, R 151 KIP/D11)	-	RNAV 1	-
003	TF	EGOBA	-	087 (078.3)	22.0	-	-10 000	-	37°29'14.7"N 127°22'45.9"E (R 086 SEL/D22, R 043 SOT/D29)	-	RNAV 1	-

Change : Amended coordinate and radial format.

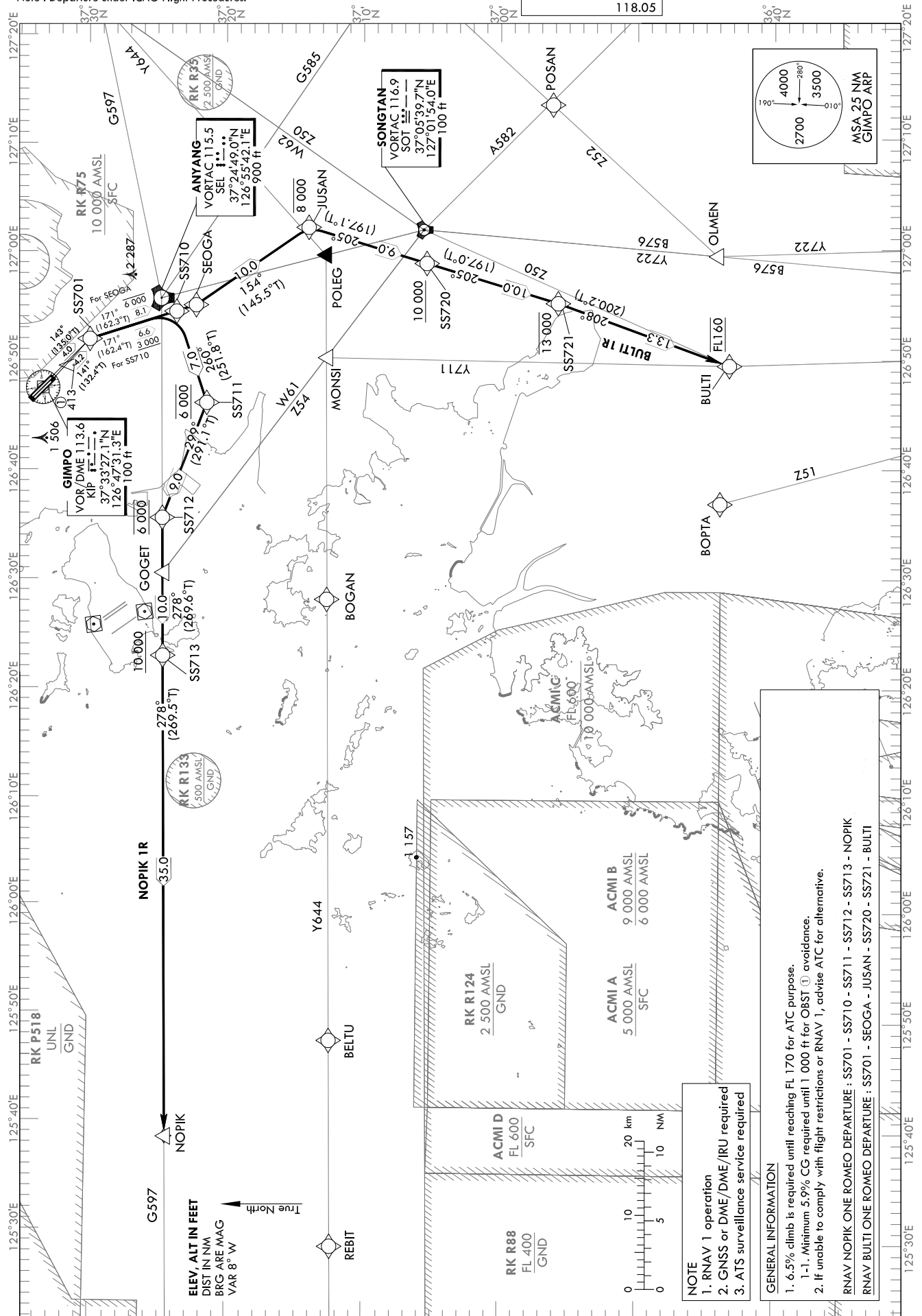
STANDARD DEPARTURE CHART
INSTRUMENT (SID) - ICAO

Note : Departure under ICAO Flight Procedures.

TRANSITION ALT 14 000
TRANSITION LVL FL 140

SEOUL	DEP	125.15
		121.4
		124.8
GIMPO	TWR	118.1
		118.05

SEOUL/Gimpo Intl(RKSS)
RWY 14L/R
RNAV NOPIK 1R, RNAV BULTI 1R



NOTE
1. RNAV 1 operation
2. GNSS or DME/DME/IRU required
3. ATS surveillance service required

GENERAL INFORMATION
1. 6.5% climb is required until reaching FL 170 for ATC purpose.
1-1. Minimum 5.9% CG required until 1 000 ft for OBST (1) avoidance.
2. If unable to comply with flight restrictions or RNAV 1, advise ATC for alternative.
RNAV NOPIK ONE ROMEO DEPARTURE : SS701 - SS710 - SS711 - SS712 - SS713 - NOPIK
RNAV BULTI ONE ROMEO DEPARTURE : SS701 - SEOGA - JUSAN - SS720 - SS721 - BULTI

SEOUL/Gimpo Intl(RKSS)
RWY 14L/R
RNAV NOPIK 1R, BULTI 1R

AERONAUTICAL DATA TABULATION

Standard Instrument Departure Procedure Coding Tables

RNAV NOPIK 1R												
Serial Number	Path Descriptor	Waypoint Identifier	Fly-over	Course/Track °M(°T)	Distance (NM)	Turn direction	Altitude (ft)	Speed (kt)	Coordinates	VPA/ RDH	Navigation specification	Remarks
001	CF	SS701	-	14L-143(135.0) 14R-141(132.4)	14L-4.0 14R-4.2	R	-	-	37°30'01.9"N 126°51'58.7"E (R 338 SEL/D6, R 142 KIP/D5)	-	RNAV 1	-
002	TF	SS710	-	171 (162.4)	6.6	-	+3 000	-	37°23'42.2"N 126°54'29.3"E (R 350 SOT/D19, R 158 KIP/D11)	-	RNAV 1	-
003	TF	SS711	-	260 (251.8)	7.0	-	@6 000	-	37°21'30.5"N 126°46'08.9"E (R 255 SEL/D8, R 193 KIP/D12)	-	RNAV 1	-
004	TF	SS712	-	299 (291.1)	9.0	-	@6 000	-	37°24'43.8"N 126°35'37.7"E (R 278 SEL/D16, R 235 KIP/D13)	-	RNAV 1	-
005	TF	SS713	-	278 (269.6)	10.0	-	+10 000	-	37°24'39.0"N 126°23'01.4"E (R 278 SEL/D26, R 310 SOT/D36)	-	RNAV 1	-
006	TF	NOPIK	-	278 (269.5)	35.0	-	-	-	37°24'12.0"N 125°39'05.0"E (R 278 SEL/D61, R 294 SOT/D69)	-	RNAV 1	-

RNAV BULTI 1R												
Serial Number	Path Descriptor	Waypoint Identifier	Fly-over	Course/Track °M(°T)	Distance (NM)	Turn direction	Altitude (ft)	Speed (kt)	Coordinates	VPA/ RDH	Navigation specification	Remarks
001	CF	SS701	-	14L-143(135.0) 14R-141(132.4)	14L-4.0 14R-4.2	R	-	-	37°30'01.9"N 126°51'58.7"E (R 338 SEL/D6, R 142 KIP/D5)	-	RNAV 1	-
002	TF	SEOGA	-	171 (162.3)	8.1	-	-6 000	-	37°22'16.6"N 126°55'04.6"E (R 350 SOT/D18, R 160 KIP/D13)	-	RNAV 1	-
003	TF	JUSAN	-	154 (145.5)	10.0	-	-8 000	-	37°14'03.3"N 127°02'08.6"E (R 162 SEL/D12, R 157 KIP/D23)	-	RNAV 1	-
004	TF	SS720	-	205 (197.1)	9.0	-	+10 000	-	37°05'26.4"N 126°58'50.5"E (R 181 SEL/D20, R 273 SOT/D3)	-	RNAV 1	-
005	TF	SS721	-	205 (197.0)	10.0	-	-13 000	-	36°55'51.6"N 126°55'11.3"E (R 189 SEL/D29, R 217 SOT/D11)	-	RNAV 1	-
006	TF	BULTI	-	208 (200.2)	13.3	-	@FL 160	-	36°43'22.3"N 126°49'29.7"E (R 195 SEL/D42, R 212 SOT/D24)	-	RNAV 1	-

Change : Amended coordinate and radial format.

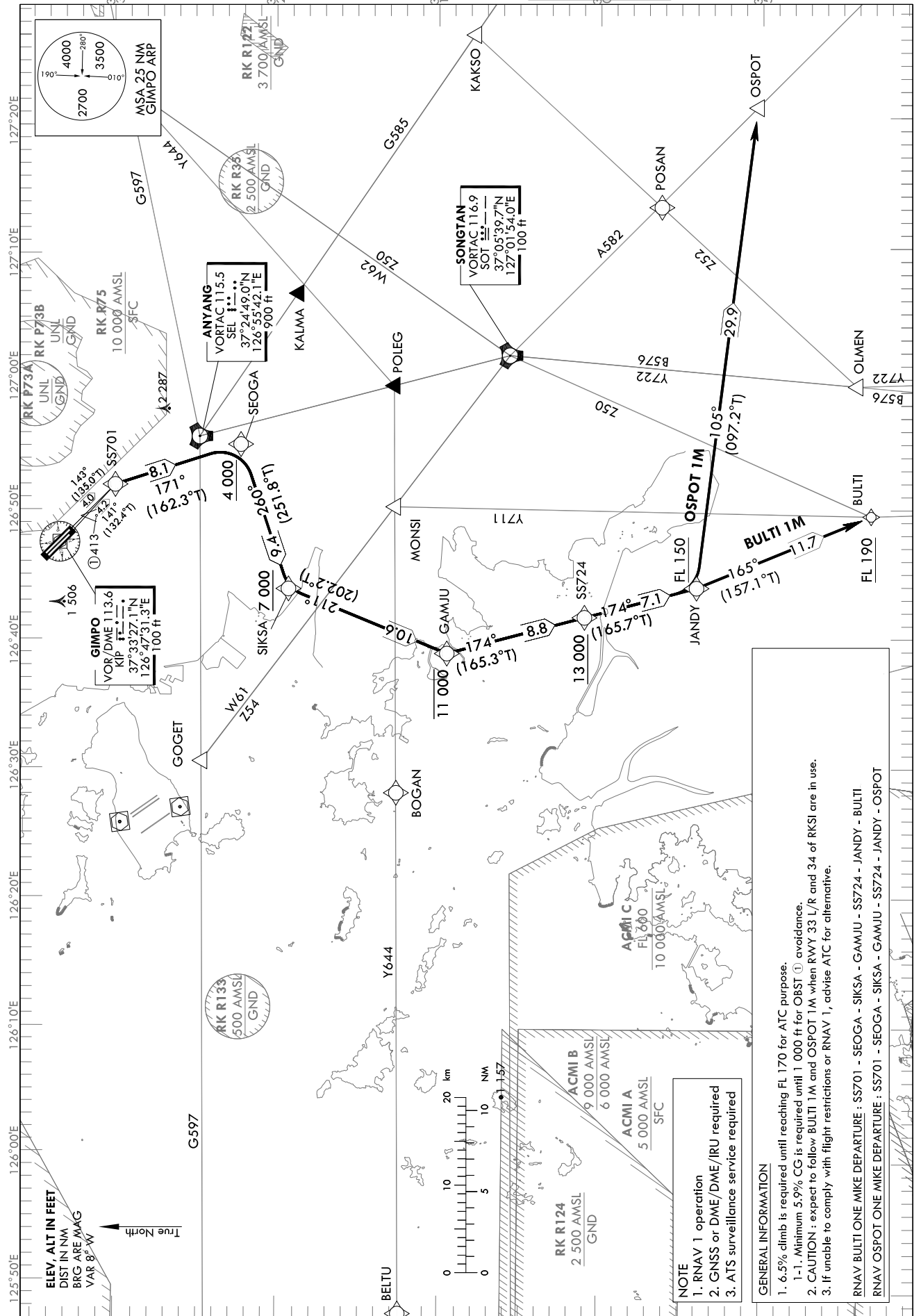
STANDARD DEPARTURE CHART
INSTRUMENT (SID) - ICAO

Note : Departure under ICAO Flight Procedures.

TRANSITION ALT 14 000
TRANSITION LVL FL 140

SEOUL	DEP	125.15
		121.4
		124.8
GIMPO	TWR	118.1
		118.05

SEOUL/Gimpo Intl(RKSS)
RWY 14L/R
RNAV BULTI 1M, RNAV OSPOT 1M



SEOUL/Gimpo Intl(RKSS)
RWY 14L/R
RNAV BULTI 1M, OSPOT 1M

AERONAUTICAL DATA TABULATION

Standard Instrument Departure Procedure Coding Tables

RNAV BULTI 1M

Serial Number	Path Descriptor	Waypoint Identifier	Fly-over	Course/Track °M(T)	Distance (NM)	Turn direction	Altitude (ft)	Speed (kt)	Coordinates	VPA/ RDH	Navigation specification	Remarks
001	CF	SS701	-	14L-143(135.0) 14R-141(132.4)	14L-4.0 14R-4.2	R	-	-	37°30'01.9"N 126°51'58.7"E (R 338 SEL/D6, R 1.42 KIP/D5)	-	RNAV 1	-
002	TF	SEOGA	-	171 (162.3)	8.1	-	+4 000	-	37°22'16.6"N 126°55'04.6"E (R 350 SOT/D18, R 1.60 KIP/D13)	-	RNAV 1	-
003	TF	SIKSA	-	260 (251.8)	9.4	-	+7 000	-	37°19'20.3"N 126°43'55.4"E (R 248 SEL/D11, R 200 KIP/D14)	-	RNAV 1	-
004	TF	GAMJU	-	211 (202.2)	10.6	-	-11 000	-	37°09'33.1"N 126°38'55.8"E (R 229 SEL/D20, R 290 SOT/D19)	-	RNAV 1	-
005	TF	SS724	-	174 (165.3)	8.8	-	+13 000	-	37°01'03.4"N 126°41'43.1"E (R 213 SEL/D26, R 262 SOT/D17)	-	RNAV 1	-
006	TF	JANDY	-	174 (165.7)	7.1	-	+FL 150	-	36°54'08.6"N 126°43'59.3"E (R 205 SEL/D32, R 239 SOT/D18)	-	RNAV 1	-
007	TF	BULTI	-	165 (157.1)	11.7	-	+FL 190	-	36°43'22.3"N 126°49'29.7"E (R 195 SEL/D42, R 212 SOT/D24)	-	RNAV 1	-

RNAV OSPOT 1M

Serial Number	Path Descriptor	Waypoint Identifier	Fly-over	Course/Track °M(T)	Distance (NM)	Turn direction	Altitude (ft)	Speed (kt)	Coordinates	VPA/ RDH	Navigation specification	Remarks
001	CF	SS701	-	14L-143(135.0) 14R-141(132.4)	14L-4.0 14R-4.2	R	-	-	37°30'01.9"N 126°51'58.7"E (R 338 SEL/D6, R 1.42 KIP/D5)	-	RNAV 1	-
002	TF	SEOGA	-	171 (162.3)	8.1	-	+4 000	-	37°22'16.6"N 126°55'04.6"E (R 350 SOT/D18, R 1.60 KIP/D13)	-	RNAV 1	-
003	TF	SIKSA	-	260 (251.8)	9.4	-	+7 000	-	37°19'20.3"N 126°43'55.4"E (R 248 SEL/D11, R 200 KIP/D14)	-	RNAV 1	-
004	TF	GAMJU	-	211 (202.2)	10.6	-	-11 000	-	37°09'33.1"N 126°38'55.8"E (R 229 SEL/D20, R 290 SOT/D19)	-	RNAV 1	-
005	TF	SS724	-	174 (165.3)	8.8	-	+13 000	-	37°01'03.4"N 126°41'43.1"E (R 213 SEL/D26, R 262 SOT/D17)	-	RNAV 1	-
006	TF	JANDY	-	174 (165.7)	7.1	-	+FL 150	-	36°54'08.6"N 126°43'59.3"E (R 205 SEL/D32, R 239 SOT/D18)	-	RNAV 1	-
007	TF	OSPOT	-	105 (097.2)	29.9	-	-	-	36°50'18.1"N 127°20'54.9"E (R 1.58 SEL/D40, R 1.43 SOT/D22)	-	RNAV 1	-

Change : Amended coordinate and radial format.

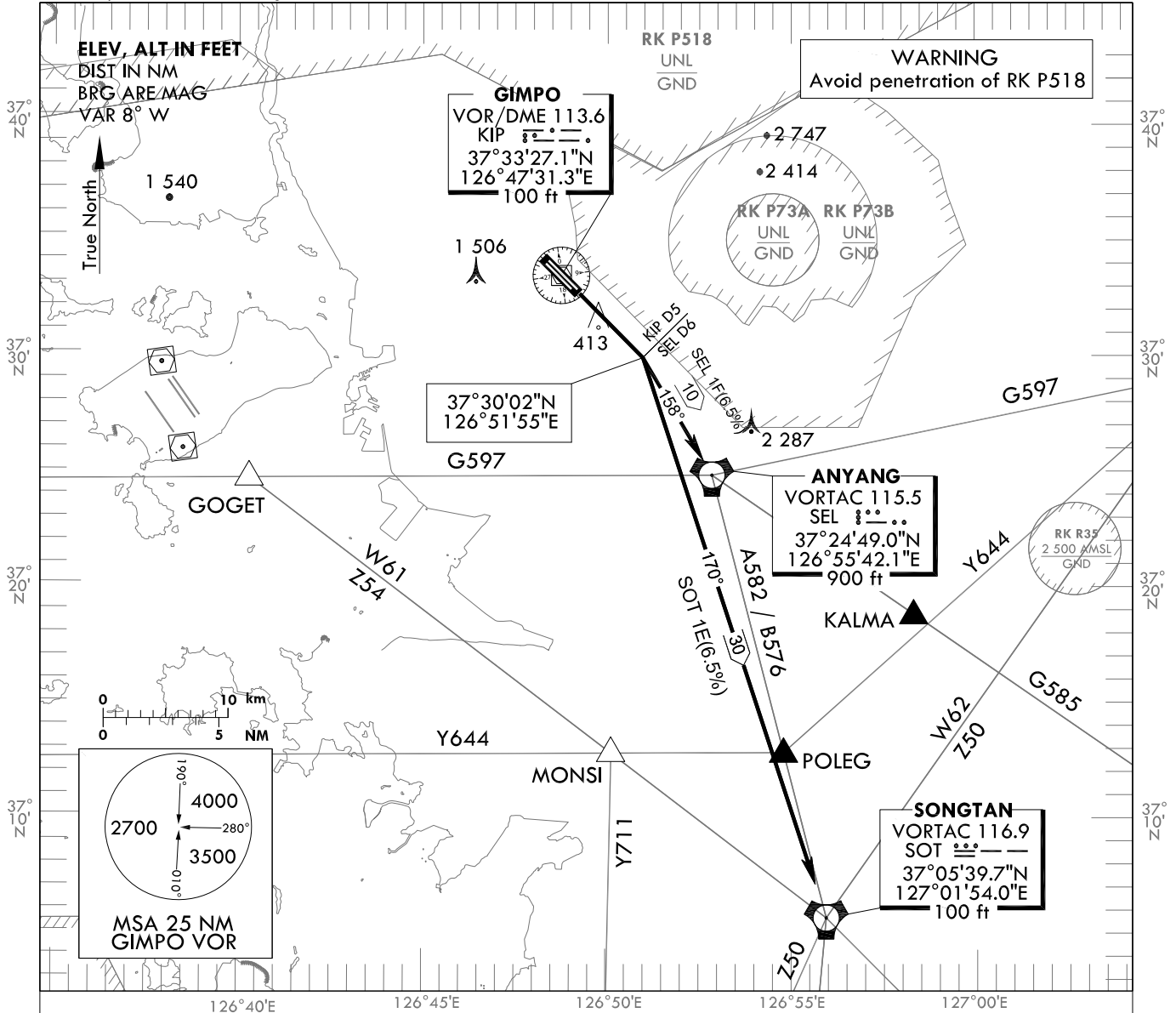
**STANDARD DEPARTURE CHART
INSTRUMENT (SID) - ICAO**

TRANSITION ALT 14 000
TRANSITION LVL FL 140

SEOUL DEP	125.15
	121.4
	124.8
GIMPO TWR	118.1
	118.05

SEOUL/Gimpo Intl(RKSS)
RWY 14L/R
SEL 1F, SOT 1E

Note : Departure under ICAO Flight Procedures.



GENERAL INFORMATION

1. 6.5% CG necessary for Airspace and ATC purpose and 5.0% for avoiding OBST.
2. If unable to comply with flight restrictions, advise ATC well before departure.
3. Stepped climb : Due to interaction with other routes.

SEL(ANYANG) ONE FOXTROT DEPARTURE :

TAKE OFF RWY 14L/R : Direct R 143 KIP/D5(if KIP not available , climb on runway heading) turn RIGHT to intercept R 338 SEL and proceed to SEL Cross SEL at or above 4 000 ft.
Maintain 6 000 ft until instructed by ATC.
- For airway B576 or A582, cross 4DME south of SEL at or above 5 000 ft
SOT at or above 11 000 ft, 8DME south of SOT at or above FL 150 unless cleared by ATC.
- For airway G597 cross EGOBA at or above 8 000 ft unless cleared by ATC.

SOT(SONGTAN) ONE ECHO DEPARTURE :

TAKE OFF RWY 14L/R : Direct R 143 KIP/D5(if KIP not available , climb on runway heading) turn RIGHT to intercept R 350 SOT and proceed to SOT. Maintain 6 000 ft until instructed by ATC.

Change : Amended radial format.

INTENTIONALLY

LEFT

BLANK

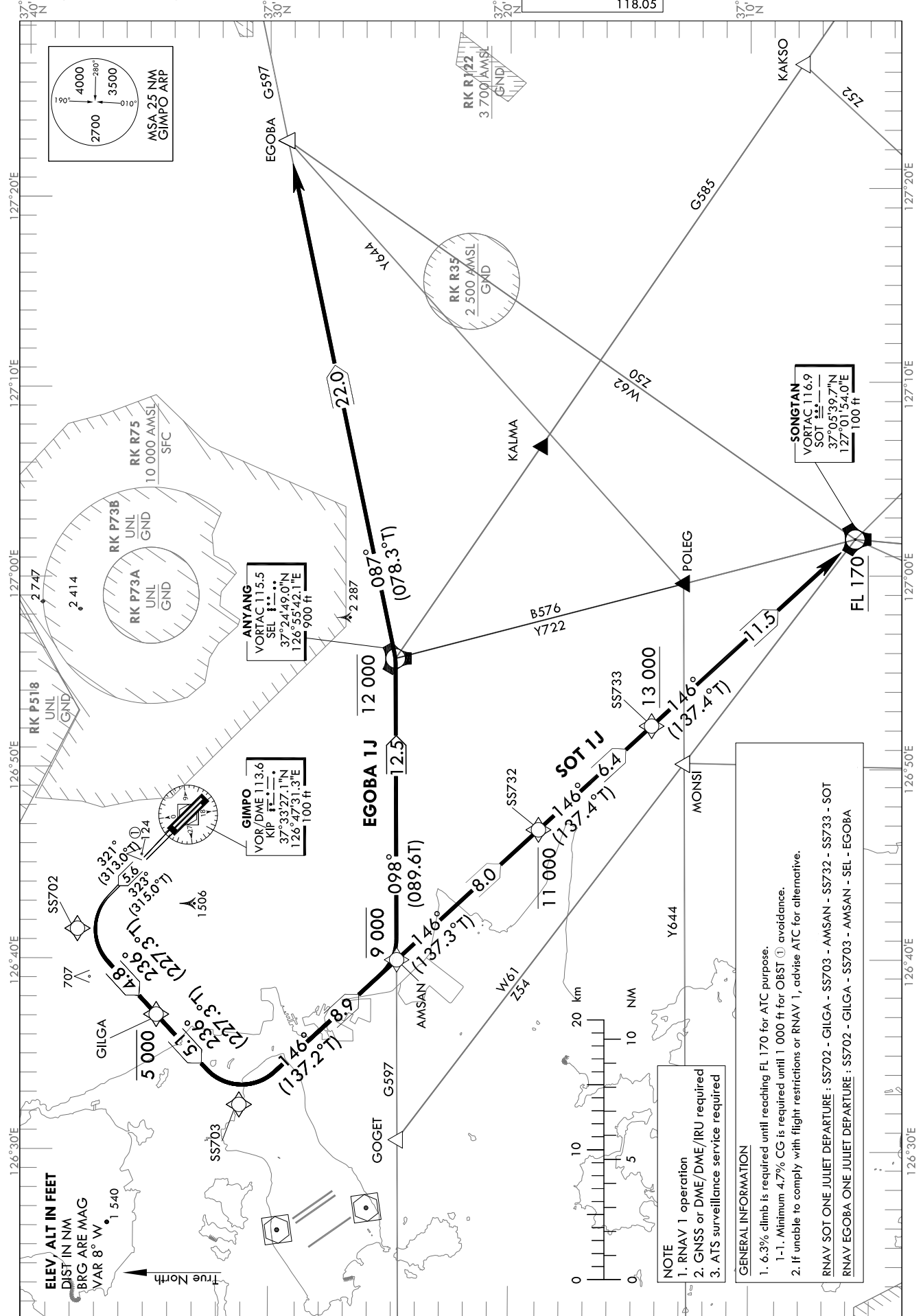
STANDARD DEPARTURE CHART
INSTRUMENT (SID) - ICAO

Note : Departure under ICAO Flight Procedures.

TRANSITION ALT 14 000
TRANSITION LVL FL 140

SEOUL	DEP	125.15
		121.4
		124.8
GIMPO	TWR	118.1
		118.05

SEOL/Gimpo Intl(RKSS)
RWY 32L/R
RNAV SOT 1J, RNAV EGOBA 1J



SEOUL/Gimpo Intl(RKSS)
RWY 32L/R
RNAV SOT 1J, RNAV EGOBA 1J

AERONAUTICAL DATA TABULATION

Standard Instrument Departure Procedure Coding Tables

Serial Number	Path Descriptor	Waypoint Identifier	Fly-over	Course/Track °M(°T)	Distance (NM)	Turn direction	Altitude (ft)	Speed (kt)	Coordinates	VPA/ RDH	Navigation specification	Remarks
001	CF	SS702	-	32L-323(315.0) 32R-321(313.0)	5.6	L	-	-	37°38'03.0"N 126°41'33.7"E (R 328 SEL/D17, R 322 KIP/D7)	-	RNAV 1	-
002	TF	GILGA	-	236 (227.3)	4.8	-	-5 000	-	37°34'45.5"N 126°37'04.7"E (R 312 SEL/D18, R 287 KIP/D8)	-	RNAV 1	-
003	TF	SS703	-	236 (227.3)	5.1	-	-	-	37°31'17.7"N 126°32'22.3"E (R 297 SEL/D20, R 268 KIP/D12)	-	RNAV 1	-
004	TF	AMSAN	-	146 (137.2)	8.9	-	-9 000	-	37°24'45.2"N 126°39'57.2"E (R 278 SEL/D13, R 223 KIP/D11)	-	RNAV 1	-
005	TF	SS732	-	146 (137.3)	8.0	-	-11 000	-	37°18'51.2"N 126°46'45.9"E (R 238 SEL/D9, R 326 SOT/D18)	-	RNAV 1	-
006	TF	SS733	-	146 (137.4)	6.4	-	+13 000	-	37°14'08.6"N 126°52'11.0"E (R 203 SEL/D11, R 326 SOT/D12)	-	RNAV 1	-
007	TF	SOT	-	146 (137.4)	11.5	-	+FL 170	-	37°05'39.7"N 127°01'54.0"E (R 173 SEL/D20, R 165 KIP/D30)	-	RNAV 1	-

Serial Number	Path Descriptor	Waypoint Identifier	Fly-over	Course/Track °M(°T)	Distance (NM)	Turn direction	Altitude (ft)	Speed (kt)	Coordinates	VPA/ RDH	Navigation specification	Remarks
001	CF	SS702	-	32L-323(315.0) 32R-321(313.0)	5.6	L	-	-	37°38'03.0"N 126°41'33.7"E (R 328 SEL/D17, R 322 KIP/D7)	-	RNAV 1	-
002	TF	GILGA	-	236 (227.3)	4.8	-	-5 000	-	37°34'45.5"N 126°37'04.7"E (R 312 SEL/D18, R 287 KIP/D8)	-	RNAV 1	-
003	TF	SS703	-	236 (227.3)	5.1	-	-	-	37°31'17.7"N 126°32'22.3"E (R 297 SEL/D20, R 268 KIP/D12)	-	RNAV 1	-
004	TF	AMSAN	-	146 (137.2)	8.9	-	-9 000	-	37°24'45.2"N 126°39'57.2"E (R 278 SEL/D13, R 223 KIP/D11)	-	RNAV 1	-
005	TF	SEL	-	098 (089.6)	12.5	-	-12 000	-	37°24'49.0"N 126°55'42.1"E (R 354 SOT/D20, R 151 KIP/D11)	-	RNAV 1	-
006	TF	EGOBA	-	087 (078.3)	22.0	-	-	-	37°29'14.7"N 127°22'45.9"E (R 086 SEL/D22, R 043 SOT/D29)	-	RNAV 1	-

Change : Amended coordinate and radial format.

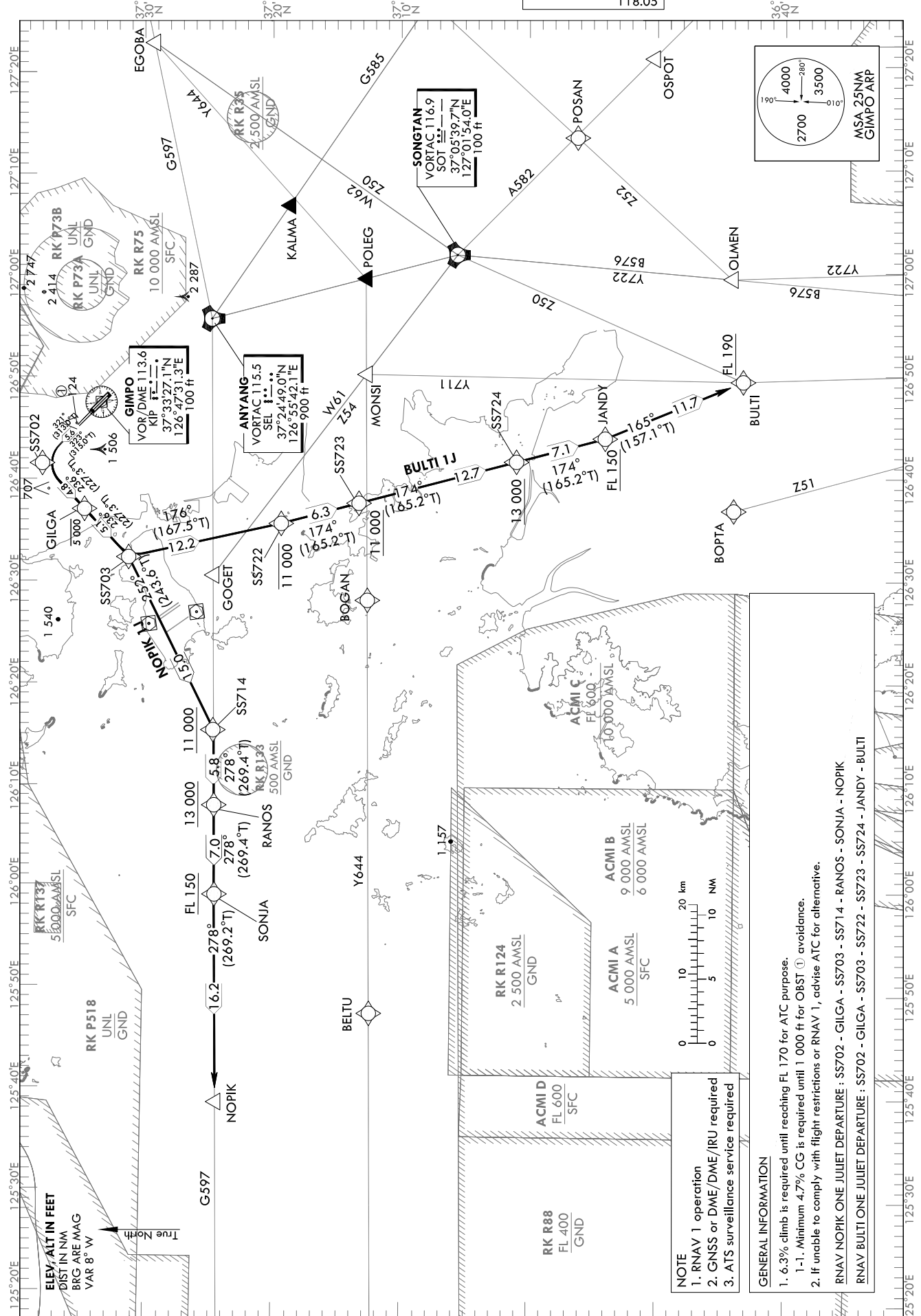
**STANDARD DEPARTURE CHART
INSTRUMENT (SID) - ICAO**

Note : Departure under ICAO Flight Procedures.

TRANSITION ALT 14 000
TRANSITION LVL FL 140

SEOUL	DEP	125.15
		121.4
		124.8
GIMPO	TWR	118.1
		118.05

SEOUL/Gimpo Intl(RKSS)
RWY 32L/R
RNAV NOPIK 1J, RNAV BULTI 1J



SEOUL/Gimpo Intl(RKSS)
RWY 32L/R
RNAV NOPIK 1J, RNAV BULTI 1J

AERONAUTICAL DATA TABULATION

Standard Instrument Departure Procedure Coding Tables

Serial Number	Path Descriptor	Waypoint Identifier	Fly-over	Course/Track °M(°T)	Distance (NM)	Turn direction	Altitude (ft)	Speed (kt)	Coordinates	VPA/RDH	Navigation specification	Remarks
001	CF	SS702	-	32L-323(315.0) 32R-321(313.0)	5.6	L	-	-	37°38'03.0"N 126°41'33.7"E (R 328 SEL/D17, R 322 KIP/D7)	-	RNAV 1	-
002	TF	GILGA	-	236 (227.3)	4.8	-	-5 000	-	37°34'45.5"N 126°37'04.7"E (R 312 SEL/D18, R 287 KIP/D8)	-	RNAV 1	-
003	TF	SS703	-	236 (227.3)	5.1	-	-	-	37°31'17.7"N 126°32'22.3"E (R 297 SEL/D20, R 268 KIP/D12)	-	RNAV 1	-
004	TF	SS714	-	252 (243.6)	15.0	-	+11 000	-	37°24'35.5"N 126°15'29.3"E (R 278 SEL/D32, R 305 SOT/D42)	-	RNAV 1	-
005	TF	RANOS	-	278 (269.4)	5.8	-	+13 000	-	37°24'31.4"N 126°08'09.0"E (R 278 SEL/D38, R 302 SOT/D47)	-	RNAV 1	-
006	TF	SONJA	-	278 (269.4)	7.0	-	+FL 150	-	37°24'26.5"N 125°59'24.4"E (R 278 SEL/D45, R 299 SOT/D53)	-	RNAV 1	-
007	TF	NOPIK	-	278 (269.2)	16.2	-	-	-	37°24'12.0"N 125°39'05.0"E (R 278 SEL/D61, R 294 SOT/D69)	-	RNAV 1	-

Serial Number	Path Descriptor	Waypoint Identifier	Fly-over	Course/Track °M(°T)	Distance (NM)	Turn direction	Altitude (ft)	Speed (kt)	Coordinates	VPA/RDH	Navigation specification	Remarks
001	CF	SS702	-	32L-323(315.0) 32R-321(313.0)	5.6	L	-	-	37°38'03.0"N 126°41'33.7"E (R 328 SEL/D17, R 322 KIP/D7)	-	RNAV 1	-
002	TF	GILGA	-	236 (227.3)	4.8	-	-5 000	-	37°34'45.5"N 126°37'04.7"E (R 312 SEL/D18, R 287 KIP/D8)	-	RNAV 1	-
003	TF	SS703	-	236 (227.3)	5.1	-	-	-	37°31'17.7"N 126°32'22.3"E (R 297 SEL/D20, R 268 KIP/D12)	-	RNAV 1	-
004	TF	SS722	-	176 (167.5)	12.2	-	-11 000	-	37°19'24.8"N 126°35'40.7"E (R 259 SEL/D17, R 311 SOT/D25)	-	RNAV 1	-
005	TF	SS723	-	174 (165.2)	6.3	-	+11 000	-	37°13'20.6"N 126°37'40.9"E (R 240 SEL/D18, R 300 SOT/D21)	-	RNAV 1	-
006	TF	SS724	-	174 (165.2)	12.7	-	+13 000	-	37°01'03.4"N 126°41'43.1"E (R 213 SEL/D26, R 262 SOT/D17)	-	RNAV 1	-
007	TF	JANDY	-	174 (165.2)	7.1	-	+FL 150	-	36°54'08.6"N 126°43'59.3"E (R 205 SEL/D32, R 239 SOT/D18)	-	RNAV 1	-
008	TF	BULTI	-	165 (157.1)	11.7	-	+FL 190	-	36°43'22.3"N 126°49'29.7"E (R 195 SEL/D42, R 212 SOT/D24)	-	RNAV 1	-

Change : Amended coordinate and radial format.

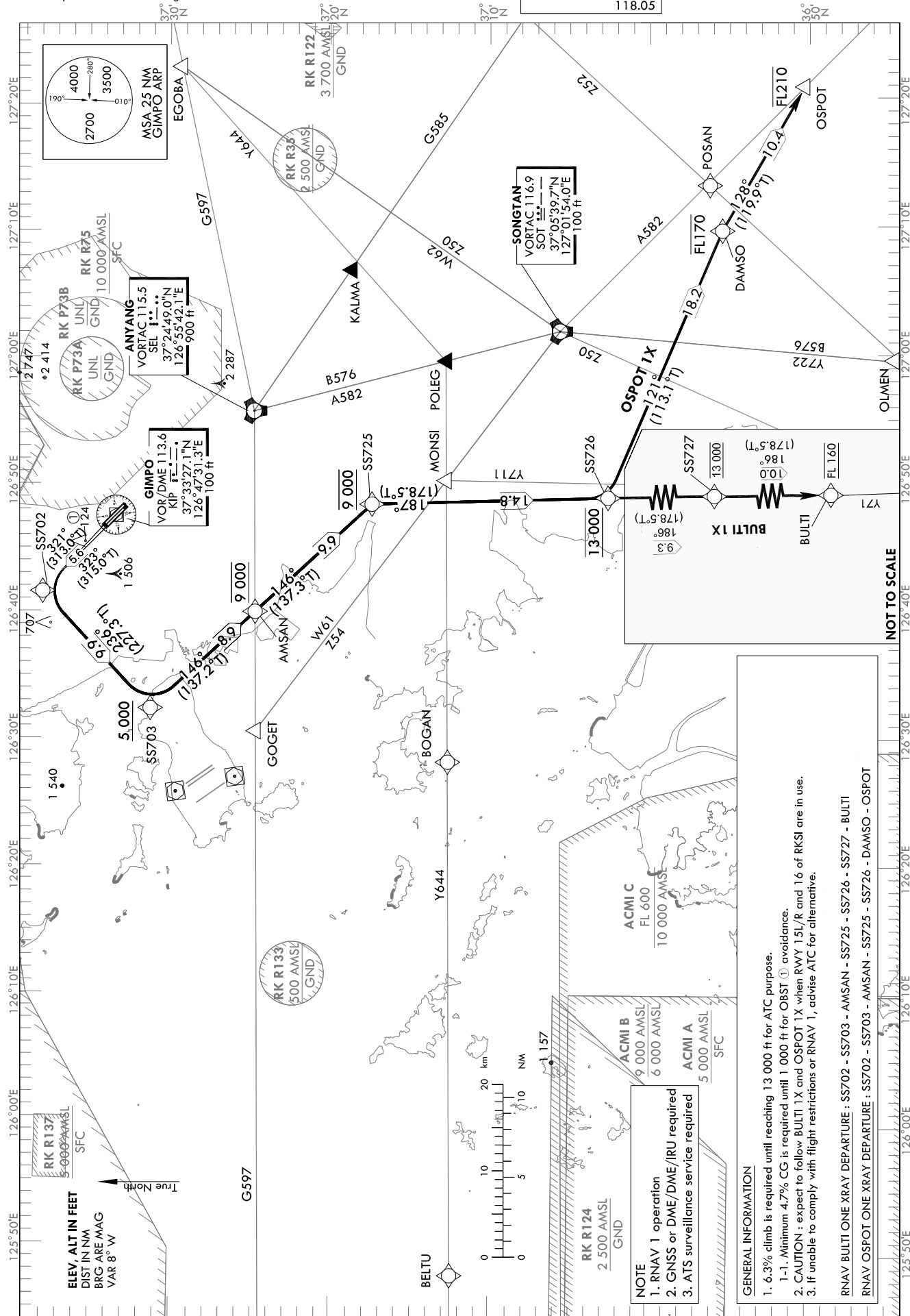
STANDARD DEPARTURE CHART
INSTRUMENT (SID) - ICAO

Note : Departure under ICAO Flight Procedures.

TRANSITION ALT 14 000
TRANSITION LVL FL 140

SEOUL DEP	125.15
	121.4
	124.8
GIMPO TWR	118.1
	118.05

SEOUL/Gimpo Intl(RKSS)
RWY 32L/R
RNAV BULTI 1X, RNAV OSPOT 1X



SEOUL/Gimpo Intl(RKSS)
RWY 32L/R
RNAV BULTI 1X, RNAV OSPOT 1X

AERONAUTICAL DATA TABULATION

Standard Instrument Departure Procedure Coding Tables

RNAV BULTI 1X												
Serial Number	Path Descriptor	Waypoint Identifier	Fly-over	Course/Track °M(°T)	Distance (NM)	Turn direction	Altitude (ft)	Speed (kt)	Coordinates	VPA/RDH	Navigation specification	Remarks
001	CF	SS702	-	32L-323(315.0) 32R-321(313.0)	5.6	L	-	-	37°38'03.0"N 126°41'33.7"E (R 328 SEL/D17, R 322 KIP/D7)	-	RNAV 1	-
002	TF	SS703	-	236 (227.3)	9.9	-	+5 000	-	37°31'17.7"N 126°32'22.3"E (R 297 SEL/D20, R 268 KIP/D12)	-	RNAV 1	-
003	TF	AMSAN	-	146 (137.2)	8.9	-	@9 000	-	37°24'45.2"N 126°39'57.2"E (R 278 SEL/D13, R 326 SOT/D26)	-	RNAV 1	-
004	TF	SS725	-	146 (137.3)	9.9	-	@9 000	-	37°17'26.4"N 126°48'23.4"E (R 226 SEL/D9, R 326 SOT/D16)	-	RNAV 1	-
005	TF	SS726	-	187 (178.5)	14.8	-	@13 000	-	37°02'39.6"N 126°48'52.6"E (R 202 SEL/D23, R 262 SOT/D11)	-	RNAV 1	-
006	TF	SS727	-	186 (178.5)	9.3	-	@13 000	-	36°53'22.9"N 126°49'10.5"E (R 197 SEL/D32, R 228 SOT/D16)	-	RNAV 1	-
007	TF	BULTI	-	186 (178.5)	10.0	-	@FL 160	-	36°43'22.3"N 126°49'29.7"E (R 195 SEL/D42, R 212 SOT/D24)	-	RNAV 1	-

RNAV OSPOT 1X												
Serial Number	Path Descriptor	Waypoint Identifier	Fly-over	Course/Track °M(°T)	Distance (NM)	Turn direction	Altitude (ft)	Speed (kt)	Coordinates	VPA/RDH	Navigation specification	Remarks
001	CF	SS702	-	32L-323(315.0) 32R-321(313.0)	5.6	L	-	-	37°38'03.0"N 126°41'33.7"E (R 328 SEL/D17, R 322 KIP/D7)	-	RNAV 1	-
002	TF	SS703	-	236 (227.3)	9.9	-	+5 000	-	37°31'17.7"N 126°32'22.3"E (R 297 SEL/D20, R 268 KIP/D12)	-	RNAV 1	-
003	TF	AMSAN	-	146 (137.2)	8.9	-	@9 000	-	37°24'45.2"N 126°39'57.2"E (R 278 SEL/D13, R 326 SOT/D26)	-	RNAV 1	-
004	TF	SS725	-	146 (137.3)	9.9	-	@9 000	-	37°17'26.4"N 126°48'23.4"E (R 226 SEL/D9, R 326 SOT/D16)	-	RNAV 1	-
005	TF	SS726	-	187 (178.5)	14.8	-	@13 000	-	37°02'39.6"N 126°48'52.6"E (R 202 SEL/D23, R 262 SOT/D11)	-	RNAV 1	-
006	TF	DAMSO	-	121 (113.1)	18.2	-	-FL 170	-	36°55'29.2"N 127°09'43.6"E (R 167 SEL/D31, R 156 SOT/D12)	-	RNAV 1	-
007	TF	OSPOT	-	128 (119.9)	10.4	-	-FL 210	-	36°50'18.1"N 127°20'54.9"E (R 158 SEL/D40, R 143 SOT/D22)	-	RNAV 1	-

Change : Amended coordinate and radial format.

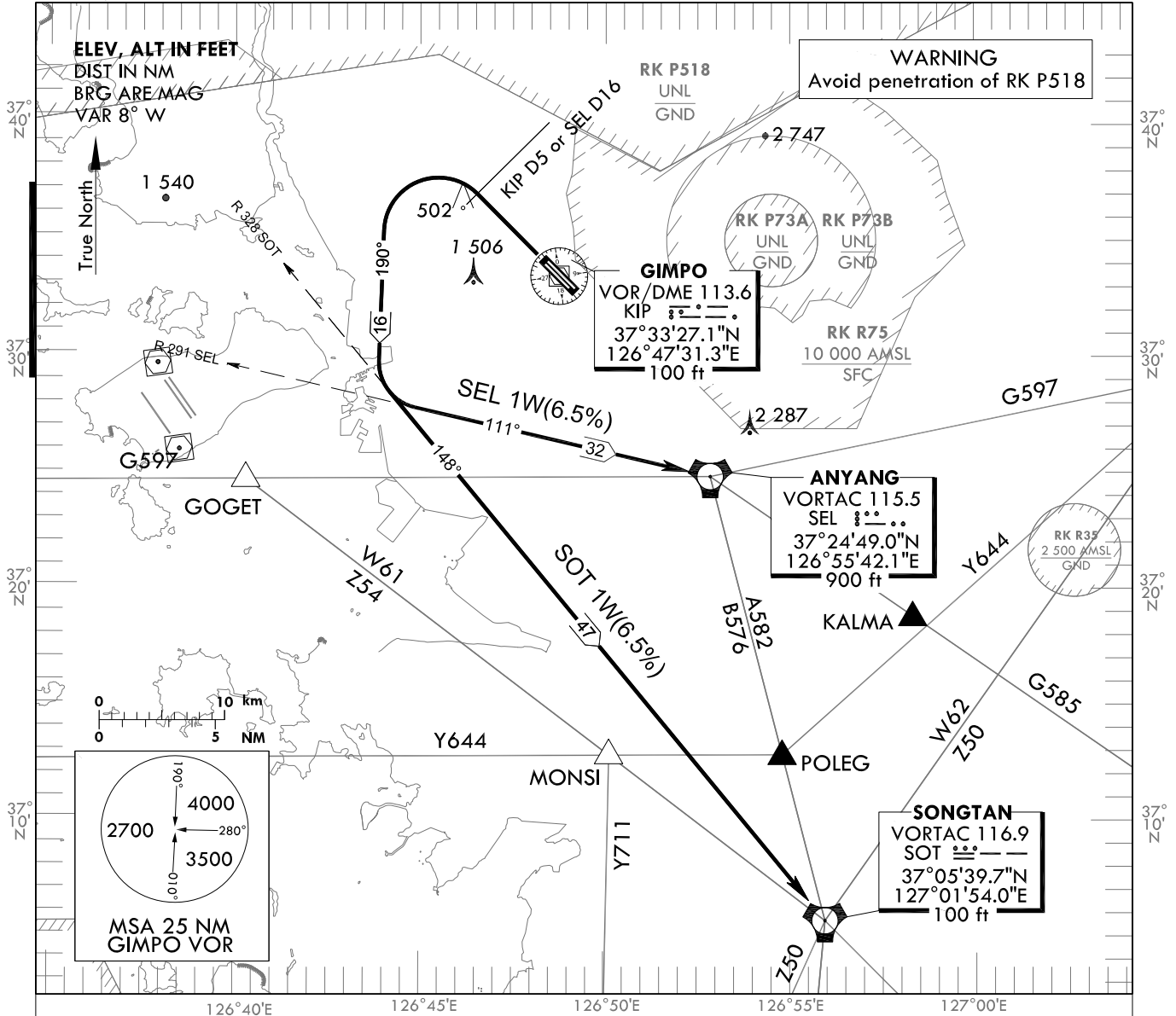
**STANDARD DEPARTURE CHART
INSTRUMENT (SID) - ICAO**

TRANSITION ALT 14 000
TRANSITION LVL FL 140

SEOUL DEP	125.15
	121.4
	124.8
GIMPO TWR	118.1
	118.05

SEOUL/Gimpo Intl(RKSS)
RWY 32L/R
SEL 1W, SOT 1W

Note : Departure under ICAO Flight Procedures.



GENERAL INFORMATION

1. 6.5% CG necessary for Airspace and ATC purpose and 4.9% for avoiding OBST.
2. If unable to comply with flight restrictions, advise ATC well before departure.
3. Stepped climb : Due to interaction with other routes. Do not climb above 4 000 ft unless cleared by ATC.
4. First turn limited maximum 250 kt IAS.
5. All of turns are based on 25 degrees bank angle due to airspace restriction.

SEL(ANYANG) ONE WHISKY DEPARTURE :

Climb on R 323 KIP/D5, then turn LEFT to intercept R 291 SEL and cross R 291 SEL/D8 then proceed to SEL. Maintain 4 000 ft until instructed by ATC.

SOT(SONGTAN) ONE WHISKY DEPARTURE

Climb on R 323 KIP/D5, then turn LEFT to intercept R 328 SOT and cross R 328 SOT/D25 then Proceed to SOT. Maintain 4 000 ft until instructed by ATC.

Change : Amended radial format.

INTENTIONALLY

LEFT

BLANK

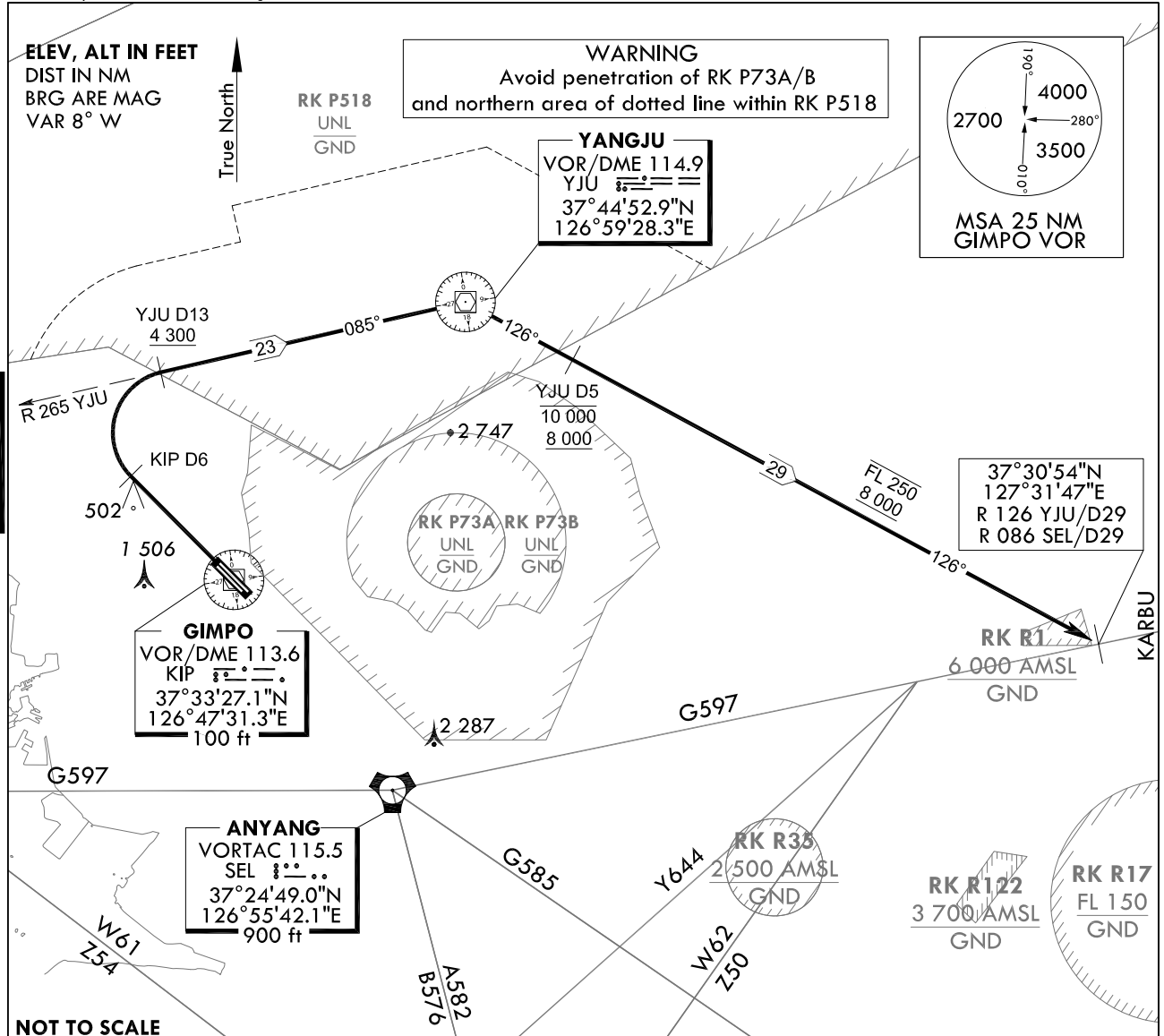
**STANDARD DEPARTURE CHART
INSTRUMENT (SID) - ICAO**

TRANSITION ALT 14 000
TRANSITION LVL FL 140

SEOUL DEP	125.15
	121.4
	124.8
GIMPO TWR	118.1
	118.05

SEOUL/Gimpo Intl(RKSS)
RWY 32L/R
KARBU 1W

Note : Departure under ICAO Flight Procedures.



NOTE

1. Minimum CG 7% to 4 300 ft for noise abatement, then resume normal CG.
2. Request of this procedure shall be made at least 10 minutes prior to take-off.
3. Operating Hours
 - SAT, SUN and Holiday : 0300 - 1200 UTC
 - Other days : 0700 - 1200 UTC

KARBU ONE WHISKY DEPARTURE :

Climb on R 323 KIP to D6, then turn right to intercept R 265 YJU/D13, then proceed to YJU.
At YJU, turn right to track outbound R 126 YJU until joining G597.
Cross R 265 YJU/D13 at or above 4 300 ft, R 126 YJU/D5 between 8 000 ft and 10 000 ft,
then at or below FL 250 until joining G597.

INTENTIONALLY

LEFT

BLANK